



# Dedicate®



## FUNGICIDE

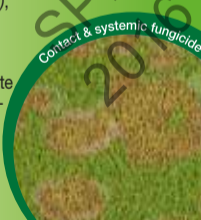
Dedicate®

A contact and systemic fungicide for use in amenity turf. For the control of Red Thread (*Laetisaria fuciformis*), Anthracnose (*Colletotrichum cereale*), Dollar Spot (*Sclerotinia homoeocarpa*), Leafspot (*Drechslera spp.*), and Rust (*Puccinia spp.*). For moderate control of Fusarium Patch (*Microdochium nivale*).

Dedicate is an aqueous suspension concentrate containing 200 g/L Tebuconazole and 100 g/L trifloxystrobin.

For professional use only.

## 250 ml e



Safety Information:

### Dedicate

Contains 200 g/L tebuconazole and 100 g/L trifloxystrobin.



### Warning

**Suspected of damaging the unborn child.**

**Very toxic to aquatic life with long lasting effects.**

Wear protective gloves/protective clothing/eye protection/face protection.

IF exposed or concerned: Call a POISON CENTER or doctor/physician.

Dispose of contents/container to a licensed hazardous-waste disposal contractor or collection site except for empty clean/triple rinsed containers which can be disposed of as non-hazardous waste.

**To avoid risks to human health and the environment, comply with the instructions for use.**

Contains trifloxystrobin, 1,2-benzisothiazolin-3-one and 5-chloro-2-methylisothiazol-3-one/2-methylisothiazol-3-one. May produce an allergic reaction.

PCS 05614

Authorisation Holder:  
Bayer CropScience Limited  
230 Cambridge Science Park,  
Milton Road, Cambridge,  
CB4 0WB, United Kingdom

Telephone: 00800 12149451.  
For 24 hour emergency information contact Bayer CropScience Ltd.  
Freephone 1800 409399.  
[www.environmentalscience.bayer.co.uk](http://www.environmentalscience.bayer.co.uk) for SDS and larger label.

Bayer

Batch number: see on the pack IE85324780A - S5

## **SAFETY PRECAUTIONS**

### **Operator Protection**

Wear suitable protective clothing and suitable protective gloves when handling the concentrate, applying by hand-held equipment or handling contaminated surfaces.

Do not breathe spray.

When using do not eat drink or smoke.

Wash any contamination from the eyes immediately.

If you feel unwell seek medical advice, show label where possible.

Wash hands and exposed skin before meals and after work.

### **Environmental Protection**

Do not contaminate water with the product or its container (Do not clean application equipment near surface water/Avoid contamination via drains from farmyards and roads).

To protect aquatic organisms respect and unsprayed buffer zone of 5m to surface water bodies.

### **Storage and Disposal**

Keep out of reach of children.

Keep in original container tightly closed in a safe place.

Do not re-use container for any purpose.

Keep away from food, drink and animal feeding stuff.

Rinse container thoroughly by using an integrated pressure rinsing device or manually rinsing three times. Add washings to sprayer at time of filling and dispose of safely.

## **DIRECTIONS FOR USE:**

IMPORTANT: This information is approved as part of the Product Label. All instructions within this section must be carefully read in order to obtain safe and successful use of this product.

Dedicate may be applied year round to managed amenity turf sites including:

Golf courses, Sport turf (football and rugby pitches, tennis, bowls and cricket pitches) Ornamental turf (parks, institutional, commercial and residential lawns, municipal grounds, cemeteries)

## **RESTRICTIONS:**

Do not apply during drought conditions or to frozen turf. If grass is being mown, DEDICATE should be applied after cutting and further mowing should not take place until AT LEAST 48 hours after treatment.

## **APPLICATION:**

For control of Red Thread, Dollar Spot and Fusarium patch, however in wet conditions moderate control of Fusarium patch may only be achieved. Control of Leaf Spot and a reduction of Anthracnose and Rust may also be achieved.

Use 1 litre of Dedicate in 400-500 litres of water per hectare of turf. Up to a maximum of 4 applications of Dedicate are permitted per year while respecting the resistance Management recommendations below. For use in knapsack sprayers and vehicle mounted hydraulic sprayers.

<b>Application Equipment</b>			
<b>Vehicle-mounted Hydraulic Sprayer</b>		<b>Knapsack Sprayer</b>	
<b>Rate per hectare</b>	<b>Water per hectare</b>	<b>Rate per 100 m<sup>2</sup></b>	<b>Water per 100 m<sup>2</sup></b>
1 Litre	400-500 litres	10 mls	4 -5 litres
		<b>Rate per 500 m<sup>2</sup></b>	<b>Water per 500 m<sup>2</sup></b>
		50 mls	20-25 litres

### **Application Timing**

Dedicate should be used preventatively or as early as possible in the disease cycle, applying at the first sign of disease.

Dedicate can be used when grass is either dormant or actively growing and displays both protective and some curative activity.

If grass is being mown, Dedicate should be applied after cutting and further mowing should not take place until AT LEAST 48 hours after treatment. This is to allow adequate movement of the systemic active ingredients throughout the plant.

Allow at least 28 days between applications of Dedicate.

Alternate with a fungicide having a different mode of action.

Dedicate can be applied year round.

### **Resistance Management:**

DEDICATE® includes active ingredients from QoI class of chemistry (Trifloxystrobin) and the DMI class of chemistry (Tebuconazole).

The use of DEDICATE® should conform to resistance management strategies. Such strategies should include using in rotation with products containing an active substance with a different mode of action which is effective against the target disease, limiting the total number of applications per season, and using non-chemical methods of disease control.

Bayer recommends responsible product stewardship to ensure effective long term control of the fungal diseases on this label.

Maximum number of treatments: 4 per year

**Mixing:**

Sprayers should be THOROUGHLY CLEANED before use and filters and jets checked for damage and blockages.

Thoroughly shake the pack before use.

Half fill the sprayer tank with clean water and agitate. Add the required amount of Dedicate. Mix thoroughly and make up to the required volume of water while still agitating. Spray immediately after mixing. Continue agitation at all times during spraying and stoppages, until the tank is completely empty.

Wash out all spray equipment thoroughly with water immediately after use.

Dedicate<sup>®</sup> is a registered trademark of Bayer CropScience